

aquaBUBBLER Installation Guide

[Version 11: July 2024] Get the latest version: bit.ly/ab-installation

Classic/Universal/Universal 2 aquaBUBBLER

Product Code: AB12/ABUA13/AB2UA14

Page 1: Preinstallation Preparation

★ IMPORTANT ★



1. Unit must be installed by a **Certified Plumber**
2. Installation must be in accordance with AS/NZS 3500.1 & AS/NZS 3500.2
Max water pressure 1000 kPa, Max temp 40°C
3. Where installed in frost-prone areas, unit must be fitted with an Anti-Freeze Valve. ❄️

4. Unit must have **≥150mm** clearance from ALL walls
5. Unit must be installed on a **flat & level** surface

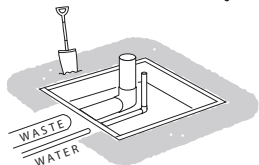


Nonadherence to any of the above, or failure to follow the steps detailed in this guide, will VOID ALL WARRANTIES

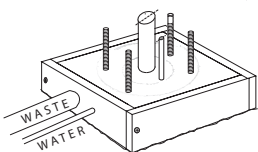
CONSIDERATIONS BEFORE INSTALLATION

1 Install onto :

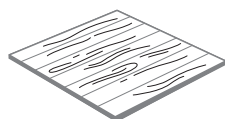
Ground Work ✓



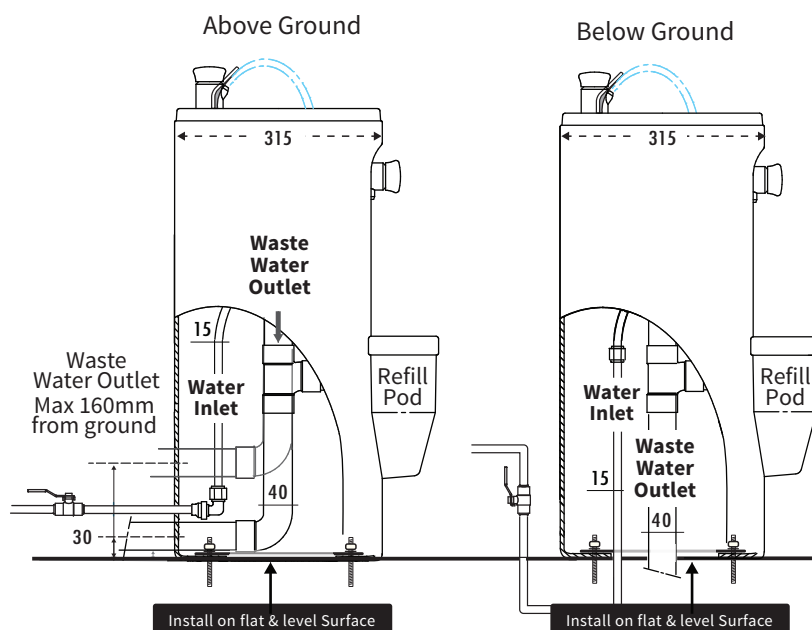
Concrete Pad ✓



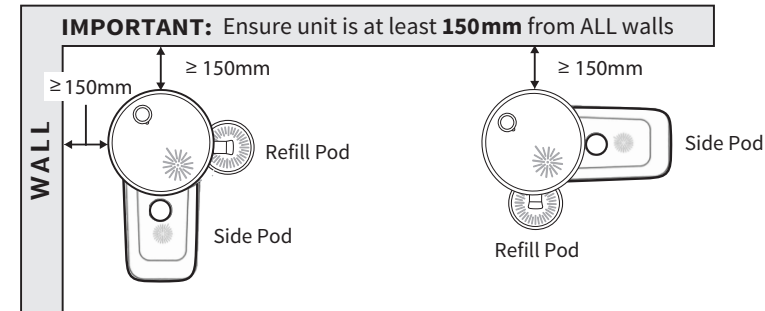
Timber Floor ✓



2 Determine Plumbing Connection



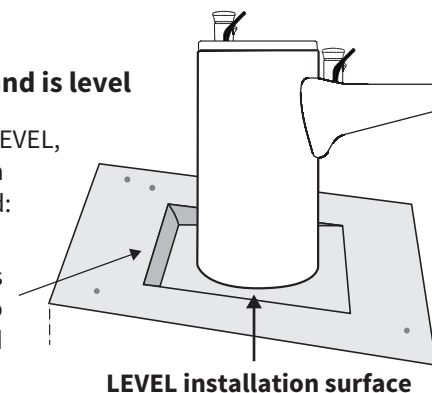
3 Determine Unit Orientation



4 Check that ground is level

If ground is NOT LEVEL,
recess a level area
as suggested:

Ensure all edges
are beveled to
avoid trip hazard



aquaBUBBLER Installation Guide

[Version 11: July 2024] Get the latest version: bit.ly/ab-installation

Classic/Universal/Universal 2 aquaBUBBLER

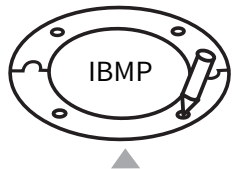
Product Code: AB12/ABUA13/AB2UA14

Page 2: Installation

1 ROUGH IN with Internal Base Mounting Plates (IBMP)

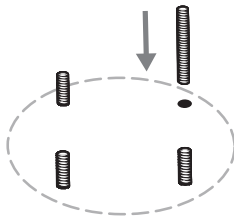
A. Place the IBMP on LEVEL mounting surface and mark holes.

Make sure the intended refill pod position is between (any) two holes.

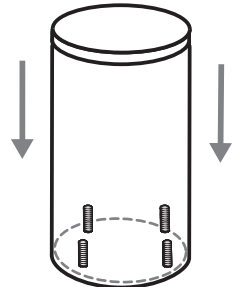


REFILL POD
will end up here

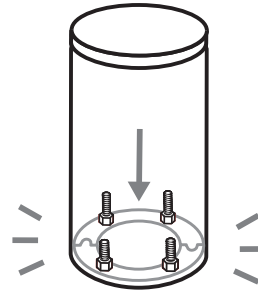
B. FIT OFF either 12mm threaded rods or 16mm dynabolts (anchors).



C. PLACE UNIT over anchors.

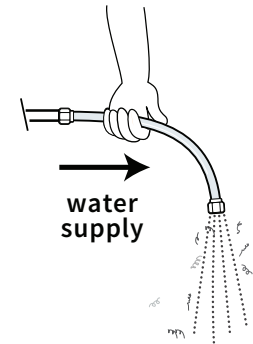


D. LOWER IBMP inside the unit over the anchors and secure.



2 Flush out the lines

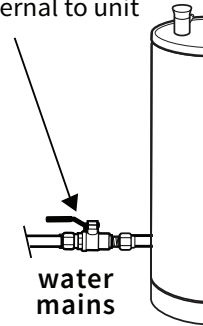
before connecting to unit to eliminate particulate matter (copper & brass filings)



3 Install Isolation Valve

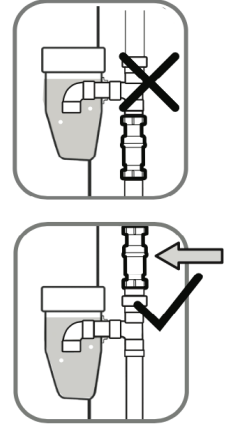
(not supplied - recommended)

on mains line, external to unit



IMPORTANT

DON'T install Self-Sealing Trap below the pod !

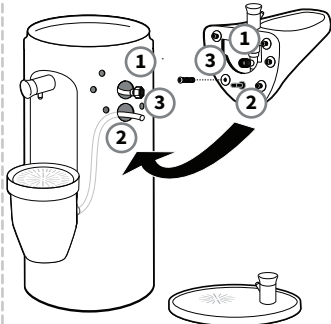


5a

Only for Universal aquaBUBBLER

Attach Side Pod

- 1 Connect pipe to tap fitting
- 2 Connect Black Director from Pod to the Waste Pipe
- 3 Screw Side Pod to body with a 5mm Allen Key (not supplied)



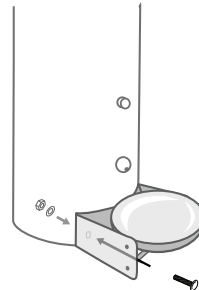
5b

Only for units with Dog Bowl

Attach Dog Bowl

Insert coach bolts through square holes (either side of Dog Bowl)

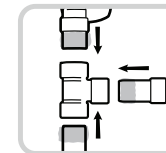
Secure bolts from inside of unit with washer and lock nut



6 DON'T FORGET:

Seal all plumbing

Apply sealant to T-junction pipe ends before inserting into other pipes



Check for leaks

Run taps and tighten any insecure connections

7 SET UP FOR USE:

Run the tap until the pod is full

Adjust water pressure

Insert a 5mm flathead screwdriver into the keyhole. Locate screw and rotate, being careful not to overtighten. It may need readjustment after 48 hours.

- Demonstrate the simple task of water pressure adjustment to the facilities manager to avoid an unnecessary return visit.

Installation complete!

Leave T15 Post Torx Security Screwdriver with client

