

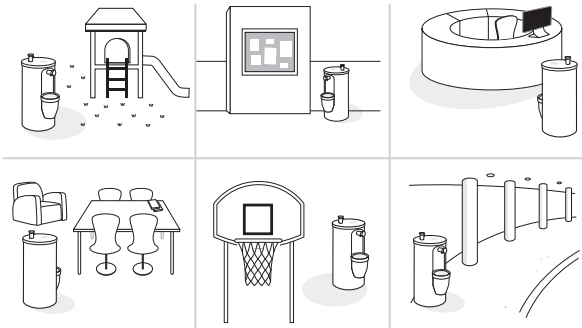
★ IMPORTANT >>>

Unit must be installed by a Certified Plumber



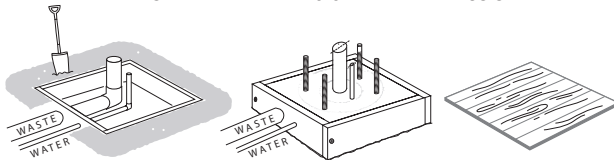
- failure to do so will void all warranties.

1 Location: Outdoor ✓ Indoor ✓

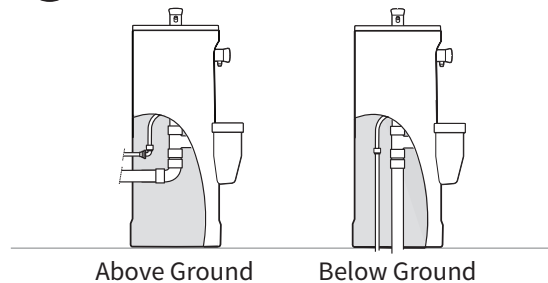


Install onto :

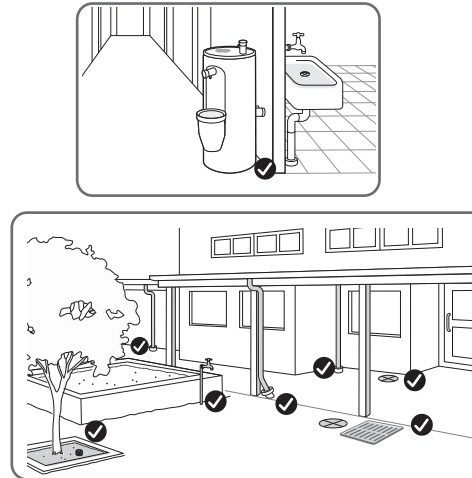
2 Ground Work ✓ Concrete Pad ✓ Timber Floor ✓



3 Determine Plumbing Connection

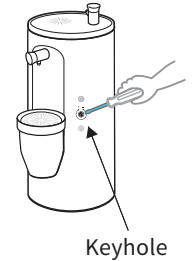
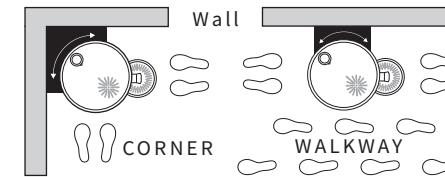


4 Identify Water & Drainage points



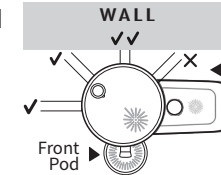
5 Determine Orientation

Locate **Keyhole** OUTSIDE
Black Zone for accessibility



6 Decide Location of Inlet/Outlet

Locate Drain Outlet and
Mains Water Inlet at
back of unit (out of
view), or at either side
if necessary



Do not place
Drain Outlet under
the Side Pod:
this will obstruct
wheelchair access

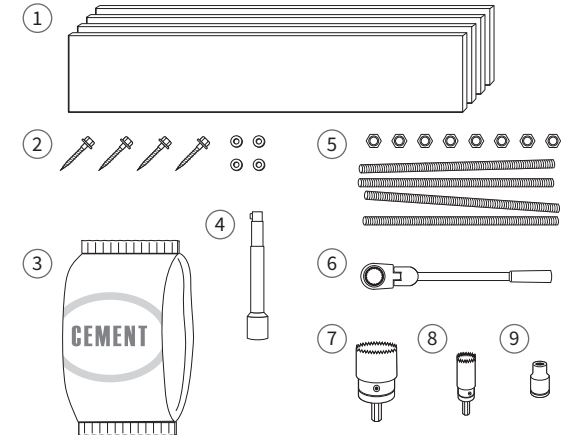
7 Is an Anti-Freeze Valve Required?

Where installed in
frost-prone areas,
unit must be fitted
with an Anti-Freeze
Valve. Warranty will
otherwise be void



8 Plumbing Tools Required

- 1 Timber boxing foundation
- 2 Screws and washers
- 3 Bag of cement
- 4 Socket Extension Bar
- 5 10 mm threaded rod and nuts
- 6 Flexible head ratchet wrench
- 7 43 mm hole saw
- 8 15 mm hole saw
- 9 10 mm socket



ATTENTION PLUMBER: See next page for **INSTALLATION GUIDE**



★ IMPORTANT >>>

Unit must be installed by a Certified Plumber



- failure to do so will void all warranties.

1 Consult Schematic

Mark measurements and dimensions as indicated by Schematic:

Classic AB12 ▶

Universal ABUA13 ▶

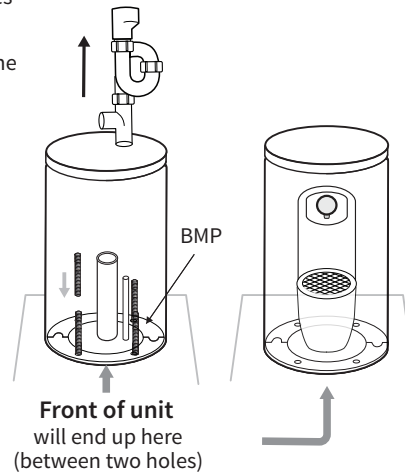
Universal 2 AB2UA14 ▶

Schematic is also available for download from our website

2 Locate Internal Base Mounting Plates

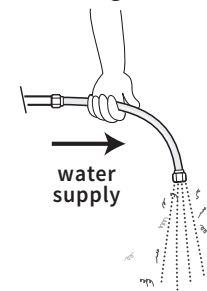
- Place Base Mounting Plate (BMP) halves in position on the installation surface.
- Position the BMP so that the Front of the unit will be in the middle of 2 holes.
- Mark anchor points on the surface through BMP holes and drill out.
- Fit off either 12mm threaded rods or 16mm dynabolts*
- Remove PVC S-Trap inside to gain access to the base of the unit.
- Place unit over anchors, then place BMP halves back inside unit over anchors and secure in place.

*Indicates correct gauges for anchor system types listed; choice of anchor system is at installer's discretion

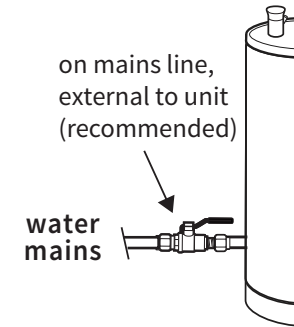


3 Flush out the lines

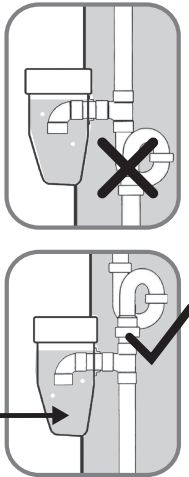
before connecting to unit in order to eliminate particulate matter (copper & brass filings)



4 Install Isolation Valve (not supplied)



5 DON'T Install S-Trap below the pod !!



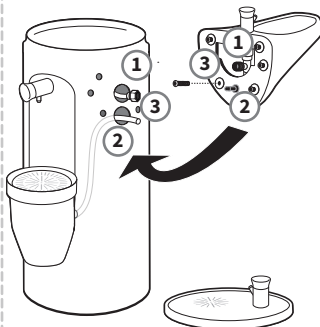
Pod has its own in-built S-Trap

6a

Universal aquaBUBBLER only

Attach Side Pod

- Connect pipe to tap fitting
- Connect Black Director from Pod to the Waste Pipe
- Screw Side Pod to body with a 5mm Allen Key (not supplied)

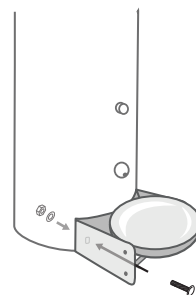


6b

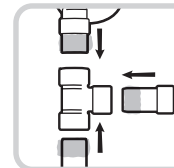
Units with Dog Bowl (DB) only

Attach DB

- Insert coach bolts through square holes (either side of DB)
- Secure bolts from inside of unit with washer and lock nut



7 DON'T FORGET:



Seal all plumbing

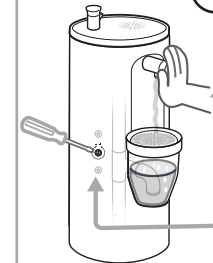
Apply sealant to T-junction pipe ends before insertion into other pipes



Check for leaks

Run taps and adjust any insecure connections

8 SET UP FOR USE:



Run the tap until the pod is full

Adjust water pressure

Rotate keyhole with a 5mm screwdriver to adjust water pressure

Advise client to check water pressure 48 hours after installation, as it may require re-adjustment



Leave T15 Post Torx Security Screwdriver with client



ATTENTION PLUMBER: See previous page for PRE-INSTALLATION GUIDE