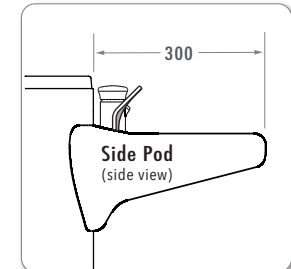
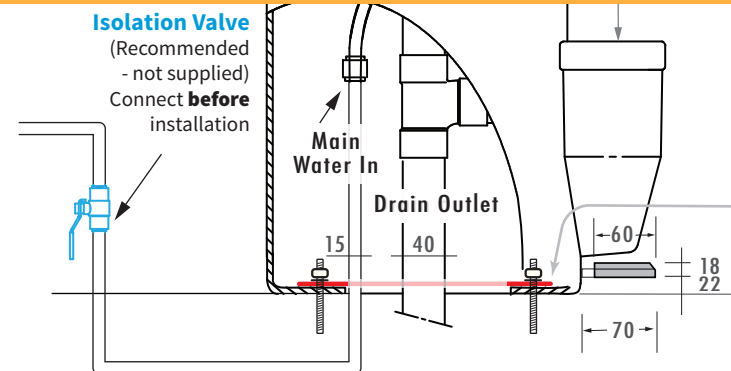
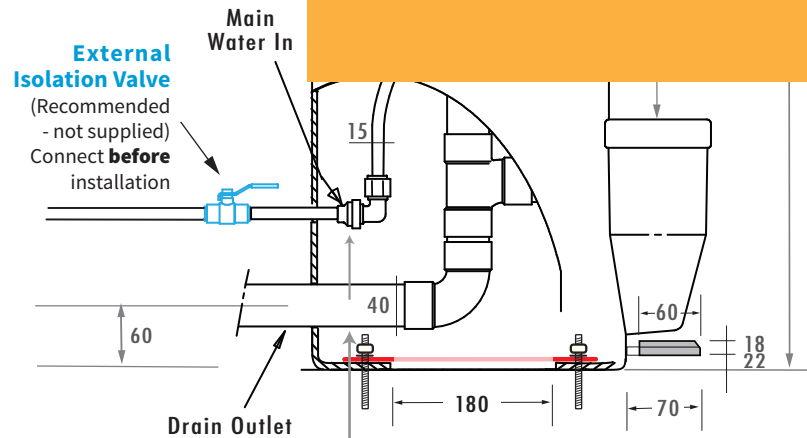


ABOVE Ground Plumbing Connection

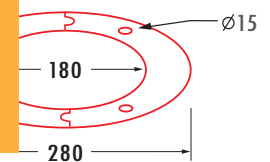
BELOW Ground Plumbing Connection



Hand Free is not available for 670mm height unit



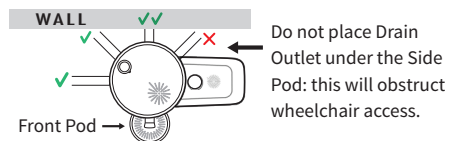
Base Mounting Plate



- Place Base Mounting Plate (BMP) halves in position on the installation surface.
- Determine where you want the Front Pod to end up, and orient the BMP so that the mid point between any pair of its holes coincides with the Front Pod centre point.
- Mark anchor points on the surface through BMP holes and drill out.
- Fit off either 12 mm threaded rods or 16mm dynabolts\*
- Place unit over anchors, then place BMP halves inside unit over anchors and secure in place.
- \* Indicates correct gauges for anchor system types listed; choice of anchor system is at installer's discretion

Location of Inlet/Outlet

Locate Drain Outlet and Mains Water Inlet at back of unit (out of view), or at either side if necessary.



Code: ABUA136HF & AB2UA146HF

1300 213 774  
www.aquabubbler.com.au

0800 213 774  
www.aquabubbler.co.nz

