
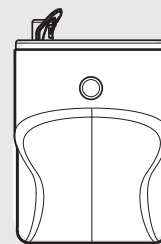
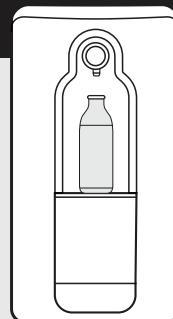


IMPORTANT

- Unit must be installed by a **Certified Plumber** 
- Installation must be in accordance with **AS/NZS 3500.1 & AS/NZS 3500.2**
max water pressure 1000 kPa, max temp 40°C

Nonadherence to any of the above, or failure to follow the steps detailed in this guide, will VOID ALL WARRANTIES



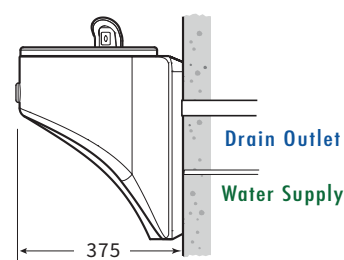
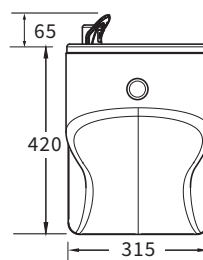
(1) Set up Drinking Unit

Decide where to mount the Drinking Component.

All measurements will be taken from the Hanging Screw, which is top and centre of the internal bracket (key hole).

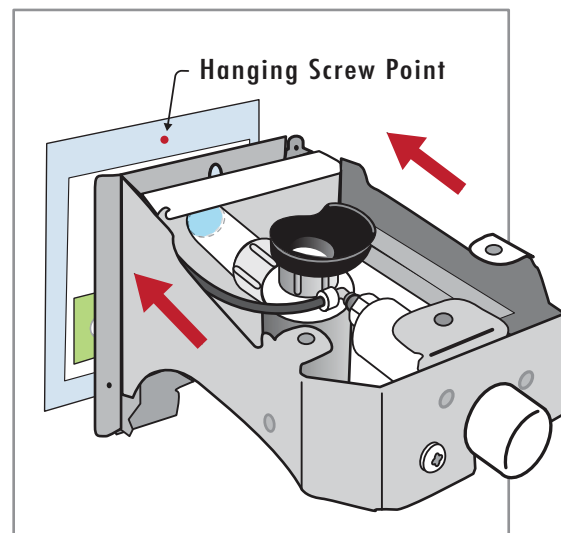
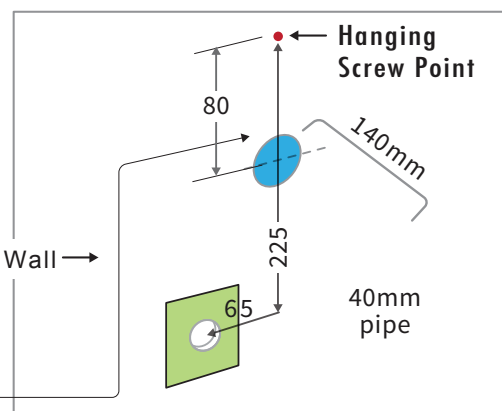
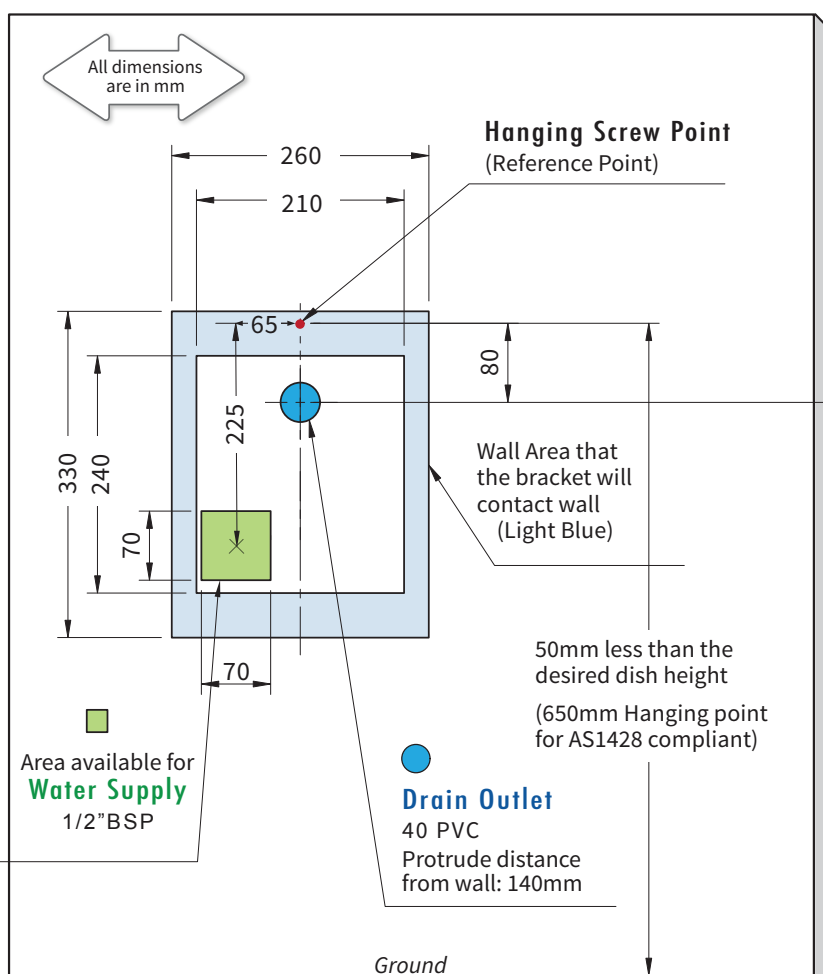
This Hanging Screw will be exactly 50mm below the desired height of the wall drinking dish.
i.e. a 700mm high unit from the ground will have a hanging screw of 650mm from the ground.

Screw in a screw at this point for hanging the Wall Bracket, leaving 2mm gap to wall.



The centre of **Drain Outlet** is 80mm directly below the Hanging Screw, and to protrude 140mm from the wall surface.

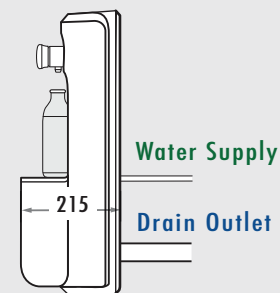
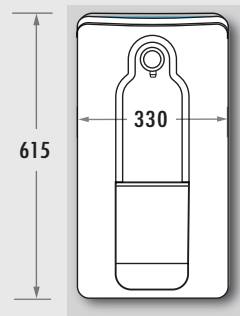
Area available for **Water Supply** (1.2" BSP) is 70mm x 70mm, situated in the left lower position of the Hanging Screw.



(2) Set up Refill Unit

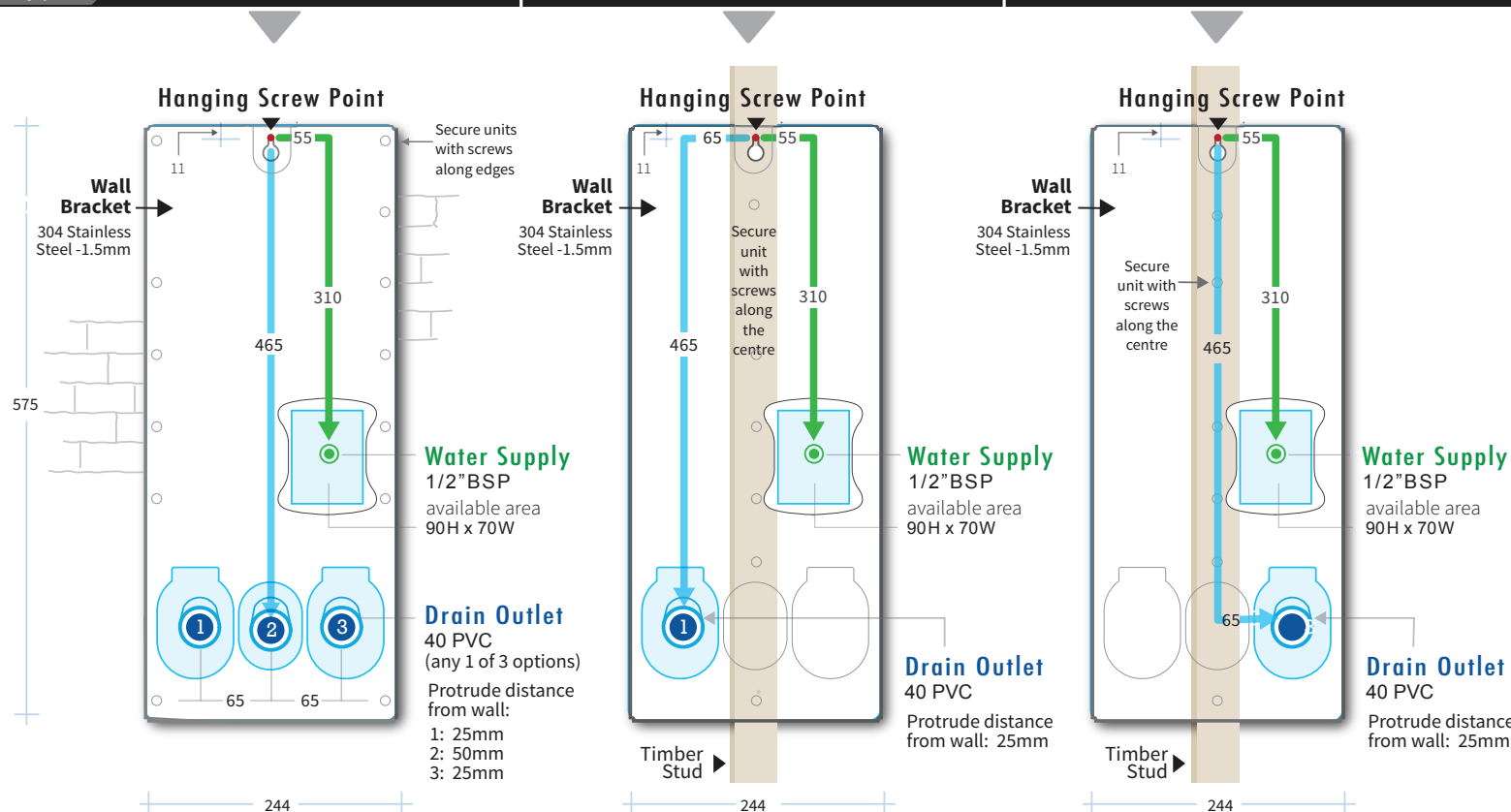
To start, decide the location of Hanging Screw.
Use it to work out connection points located below.

If set up with the unit, just hang it up and use Back Bracket as template to locate connection points.



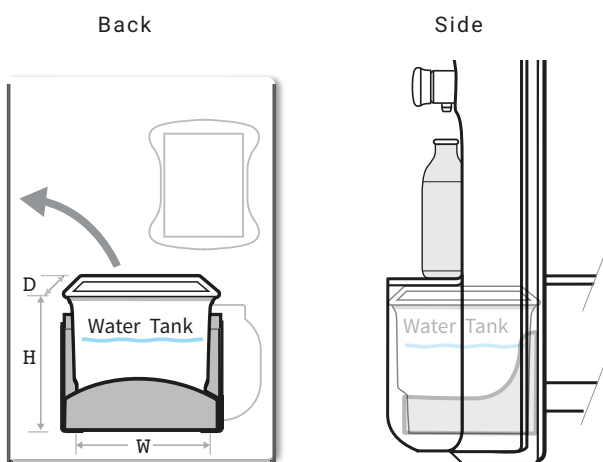
Wall Types

Brick / Solid Wall Installation	Stud Wall Installation (drainage at L)	Stud Wall Installation (drainage at R)
---------------------------------	--	--



Drainage Options

Waste Water Tank Option (ABWRWD22-T)	External Water Supply Option (ABWRWD22-P)
--------------------------------------	---



Removable Waste Water tank is supplied if option of drain pipe through the wall is not feasible.
[manually empty water in period of time]

Tank Capacity: 1 L
Tank Size: (mm)
~ 120H x 100W x 100D

