


IMPORTANT

- Unit must be installed by a **Certified Plumber** 
- Installation must be in accordance with **AS/NZS 3500.1 & AS/NZS 3500.2**
max water pressure 1000 kPa, max temp 40°C

Nonadherence to any of the above, or failure to follow the steps detailed in this guide, will VOID ALL WARRANTIES

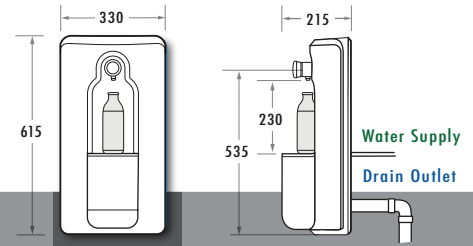


TIPS

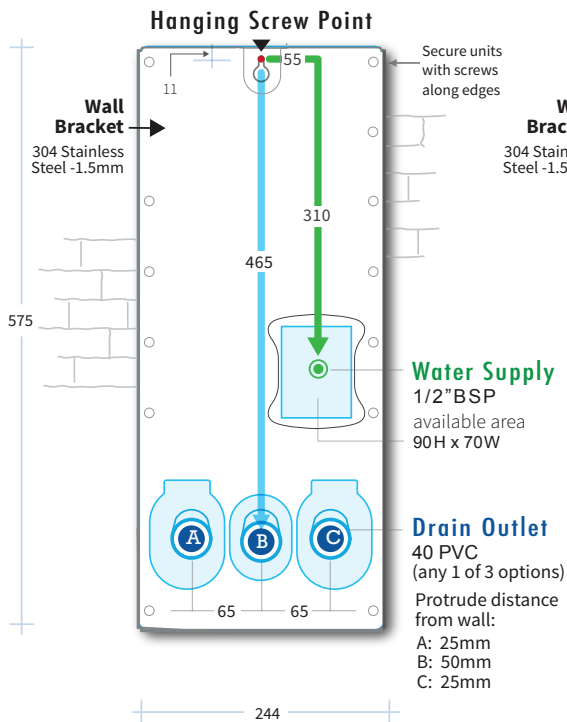
- ★ To start, decide the location of Hanging Screw. Use it to work out connection points located below.
- ★ If set up with the unit, just hang it up and use Back Bracket as template to locate connection points.

All dimensions are in mm

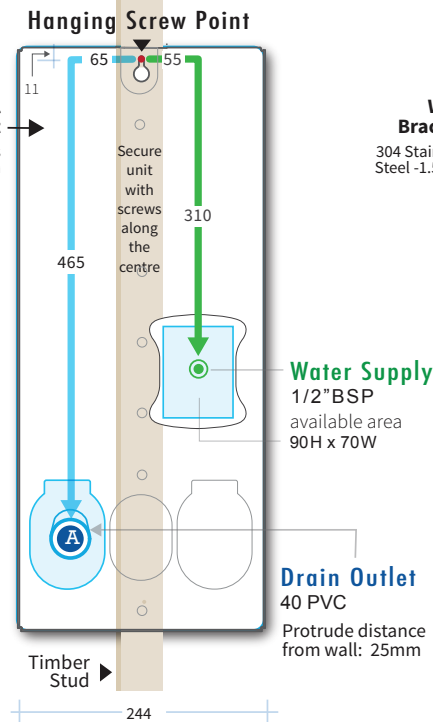
Wall Options



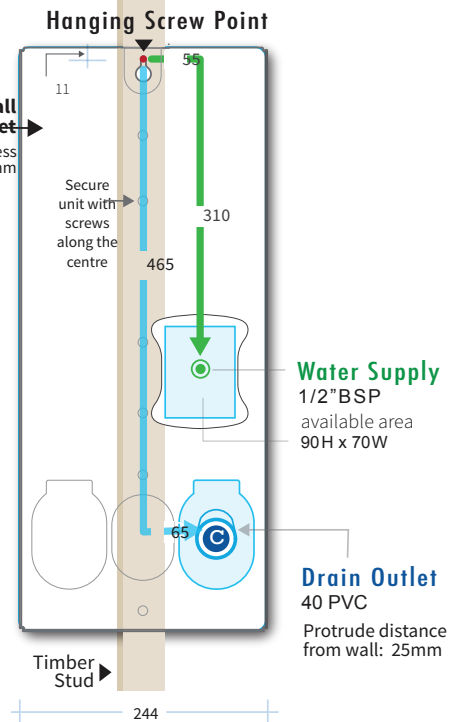
Brick / Solid Wall Installation



Stud Wall Installation (drainage at L)

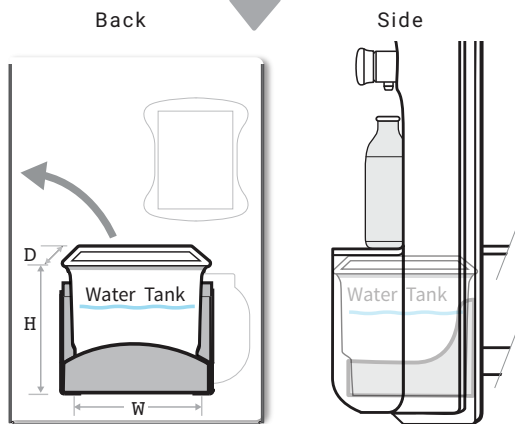


Stud Wall Installation (drainage at R)



Drainage Options

Waste Water Tank Option (ABWR21-T)



Removable Waste Water tank is supplied if option of drain pipe through the wall is not feasible.
[manually empty water in period of time]

Tank Capacity: 1 L
Tank Size: (mm)
~ 120H x 100W x 100D

External Water Supply Option (ABWR21-P)

